



CarbiCrete

Cement-free concrete

Grid Pavers

Product Information

CarbiCrete is a Montreal-based concrete technology company whose patented process enables the production of cement-free, decarbonized concrete made with industrial by-products and captured carbon dioxide.

Our cement-free grid paver is a greenspace-promoting paving solution. Its lattice pattern allows water to flow into turf or aggregate-filled voids, providing an ideal solution for stormwater runoff, erosion control, and flood prevention. Our 80mm grid paver is the perfect size for optimized handling, flexural strength, and zone coverage.

Grid pavers are a great environmentally-friendly option for parking, scenic landscaping, vehicular access areas, embankments, and other residential, commercial, or industrial projects that could benefit from permeable paving. Grid pavers are designed to bring a breath of fresh air to your outdoor spaces. By incorporating greenery into your landscaping, they help reduce the impact of urban heat islands while improving the aesthetics of the surfaces.

Technical Specifications

Complies with ASTM C1319
Supports pedestrian, light vehicular traffic and parking
Contributes to LEED v4.1 certification: Rainwater Management

Unit Specifications

Color: Slate Grey
Depth (mm/in): 400/16
Width (mm/in): 400/16
Height (mm/in): 80/3
Unit Coverage (sq m/sq ft): 0.17/1.7
Weight (kg/lb): 17/37.5
Compressive Strength: ≥ 35 MPa

Water Absorption (approx.): $\leq 7\%$ by mass
Dimensional Tolerance (mm/in): $\pm 3/0.1$
Open Area (Void): 40%
SKU: ECO-TURF

Specifications per Pallet

Number of Units: 40
Coverage per Row (sq m/sq ft): 0.65/7
Coverage per Pallet (sq m/sq ft): 6.5/70
Weight (kg/lb): 680/1500

Cubic Measurement

Quantity/Row: 4
Number of Rows: 10
Pallet Dimensions (cm/in): 100x90/40x35

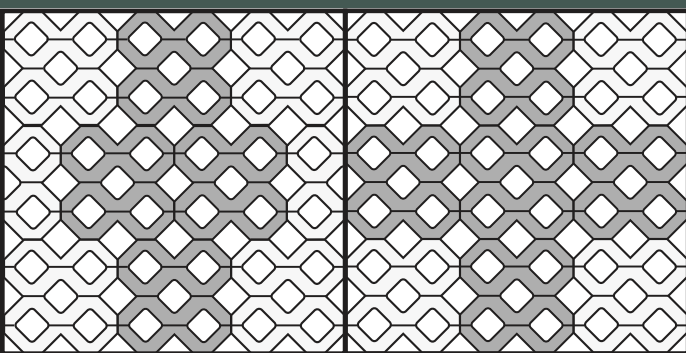
Installation

Grid pavers effectively combat urban heat islands, improve stormwater management through efficient drainage, and create more natural and user-friendly spaces. Whether filled with gravel or vegetation, these pavers allow you to create eco-friendly spaces that reflect your vision.

CarbiCrete grid pavers are identical in use to comparable hardscape products and should be installed using the same construction practices as conventional concrete grid pavers complying with ASTM C1319.

If you wish to preserve the just-installed look of your pavers, you may choose to seal your pavers after installation with a quality sealer that's designed to maintain product appearance and ease product upkeep.

Installation Patterns



Pallet Layout



CarbiCrete
1730 55th Avenue
Lachine, QC H8T 3J5

(514) 636-3614
CarbiCrete.com